

The Studio Star Quilt Block

The Studio Star¹ is based on the old-time Sister's Choice Block but is slightly different giving the stars a sort of pinwheel look to them. It is a super easy, quick and fun block to make. Use some 30's reproduction prints to give it an old-fashioned look or use bold, modern prints for an updated look.

This block is "jelly roll friendly". If you don't have jelly rolls on hand, just cut yourself some 2.5" WOF (width of fabric) strips.

Block Size

10" Finished

Note: For every two blocks, you will need two strips for the stars plus two strips for the background.

Cutting the Pieces

Directions are given for cutting two blocks at the same time.

1. Starting with the two star strips, layer your strips one on top of the other. Trim off the salvage edges.

From the layered strips, cut:

1 (2 1/2") square for center;

4 (2 1/2" x 4 1/2") rectangles for Star Point A;

1 (2 1/2" x 20 1/2") section for Star Point B.

2. Trim off the salvage edges of one of the background strips. Then take one of the 20 1/2" Star Point B sections and lay it right sides together on top of a background strip

aligning the starting ends and sides.

Stitch along long edge. As you reach the end of the star point section, layer your next star point section onto the background strip so it begins at the end of the first star point section, aligning side edges. Continue stitching along the side of the second star point section.

Fold the background strip in two at the point where the two star sections meet, aligning long edges.

Cutting through all layers and beginning at fold end, trim off just enough end to make all edges even. Then cut:

8 (2 1/2") Star Point B segments.

Open the Star Point B segments and press the seam towards star point fabric with hot iron.



Star Point B segment



3. From the other background strip, cut:

16 (2 1/2") squares.

Getting Ready to Sew

Separate your pieces so you have two each of the following sets (The sets will be complementary.):

4 matching (2 1/2" x 4 1/2") rectangles of Star Point A;



Star Point A rectangle

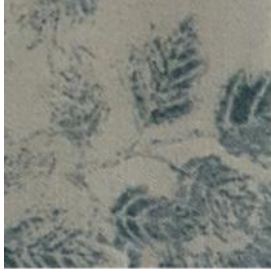
8 matching Star Point B segments (opposite fabric from Star Point A);



Star Point B segment

8 (2 1/2") background squares;

¹ Studio Star was created by Jenny Doan of Missouri Star Quilt Company. I first learned of this block through her YouTube instructional video. All written instructions for this block are my own.



Background square

1 (2 1/2") square from Star Point B fabric for center.



Center square

*The following directions are for one block.

Stitching the Blocks

Note: A 1/4" seam allowance is used throughout.

1. With right sides together and stitching along long edge, sew a Star Point B segment to a rectangle. Make four of these Corner Sections. Be sure you orient the star point segments in the same direction each time you sew. When done, all four Corner Sections should look the same.

Open the Corner Sections and press seam towards rectangle with hot iron.



Corner section

2. Now you are going to snowball the corners using the background squares. With right sides together, lay one background square on the corner of Star Point B rectangle keeping edges even. Starting in the corner at one seam edge, stitch diagonally across the background square. Trim off corner to within 1/4" of seam.



Snowball corner 1

With right sides together, place a second background square on the diagonal opposite corner on Star Point A keeping edges even. Starting in the corner at the seam edge, stitch diagonally across the background square. Trim off corner to within 1/4" of seam.



Snowball corner 2

Repeat for remaining three Corner Sections. Open snowball corners and press flat.



Snowballed corner sections

3. Lay out each block as shown in the Block Layout Diagram.

Stitch each row of one block. Stitch the rows together to make one block.

Repeat for the other block.

You now have two complementary Studio Star blocks.



Layout Guide



Complementary Studio Stars